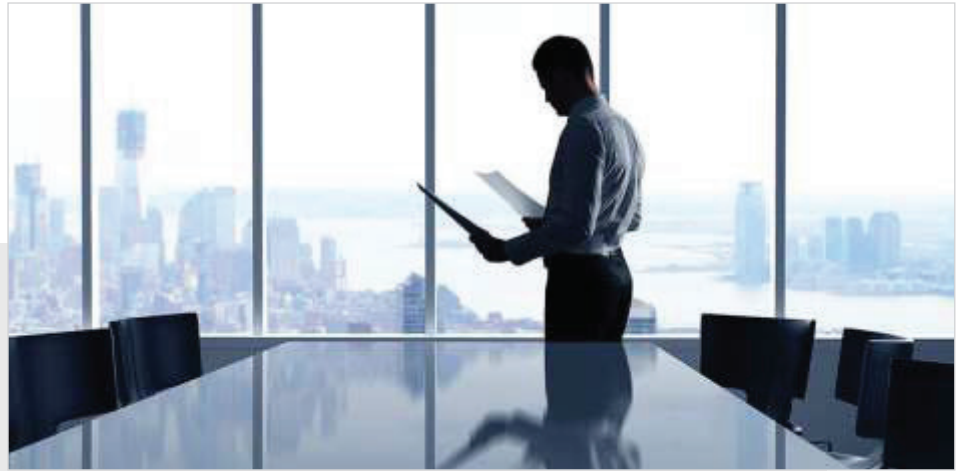




ABOUT US



Established in 2008, Samarth Electronics is one of the renowned manufacturers and traders of a complete range of Ultrasonic equipment, Ultrasonic cleaners, Ultrasonic processor, probe sonicator, hot air oven and oil bath to name a few. Since its inception, the company has been largely catering to the Medical Industry.

Headed by Mr. Amit Gupta and Santosh Bane, Samarth Electronics is headquartered in Mumbai. Presently, the company serves some of the top companies and has a strong dealer network in the city. Consistency in quality is one of the major factors that make Samarth Electronics the most preferred brand among those looking for ultrasonic cleaning equipments.

We have a professional team of experts onboard constantly ensuring that the highest level of quality is maintained. The departments set up within the company include:

- Research & Development
- Production
- Quality Check
- Marketing & Sales

Quality Assurance and customer satisfaction form the foundation of the company. Every product we built is a result of an extensive amount of research carried out by a dedicated team of Research & Development (R & D) experts at Samarth Electronics. Our final products are dispatched only after having been thoroughly inspected by the quality control team.

OUR INFRASTRUCTURE



We are bestowed with a state-of-the-art infrastructure facility that is spread over a vast area of land. Well equipped with advanced machines, it aids us in making our superlative range of equipments available to our clients. To ensure an expeditious execution of the processes, we have segregated our infrastructure facility into various units. These units are further provided with the required tools and equipments.

Below mentioned are the units we have divided our infrastructure facility into:

- Manufacturing
- Warehousing and packaging
- Quality control
- Administrative

VISION & MISSION



VISION

We are manufacturer of ultrasonic cleaning products with best quality assurance and complete customer satisfaction.

MISSION

We will serve various industries with quality solutions through innovation, R & D and will become the no. 1 company in ultrasonic cleaning industry by 2025.

VALUES



Quality

Commitment

Customer Satisfaction

Innovation & Continuous Learning

Passion

Ultrasonic Cleaner M Series

Key Industries

- Pharma
- Hospitals
- R&D Laboratories
- Jewellery



Technical Specification:

MODEL	M2	M3	M4.5	M5	M7	M10	M15	M22
Tank Size (mm) (L*W*H)	240* 140” *65	240x140x100	300x150x100	235x235x100	300x240x100	300x240x150	500x300x100	500x300x150
Outer Size (mm) (L*W*H)	265* 162*240	265* 162*240	325x176x240	265x265x250	320x276x210	325x276x260	525x320x345	530x320x400
Tank	SS 304	SS 304	SS 304	SS 304	SS 304	SS 304	SS 304	SS 304
Enclosure	SS 304	SS 304	SS 304	SS 304	SS 304	SS 304	SS 304	SS 304
Tank Capacity	2 Liter	3 Liter	4.5 Liter	5 Liter	7 Liter	10 Liter	15 Liter	22 Liter
Ultrasonic Power	50 Watts.	100 Watts.	100 Watts	100 Watts	150 Watts	250 Watts	300 Watts	400 Watts
Heater Power	100 Watts.	100 Watts.	100 Watts	200 Watts	200 Watts	200 Watts	500 Watts	500 Watts
PSP	NA	NA	Yes	Yes	Yes	Yes	Yes	Yes
Ultrasonic Freq. Khz.	40/33 ± 3	40/33 ± 3	40/33 ± 3	40/33 ± 3	40/33 ± 3	40/33 ± 3	40/33 ± 3	40/33 ± 3
Timer Digital	0 to 15 Min.	0 to 15 Min.	0 to 99 Min	0 to 99 Min	0 to 99 Min	0 to 99 Min	0 to 99 Min	0 to 99 Min
Power Input	230 VAC.	230 VAC	230 VAC	230 VAC	230 VAC	230 VAC	230 VAC	230 VAC
Degas Mode	On / Off	On / Off	On / Off	On / Off	On / Off	On / Off	On / Off	On / Off
Temperature	Amb. - 50 °c	Amb. - 50 °c	Amb. - 60 °c	Amb. - 60 °c	Amb. - 60 °c	Amb. - 60 °c	Amb. - 60 °c	Amb. - 60 °c
Transducer	Imported make PZT type bonded at the bottom of the tank with weld bond technique.							
Ultrasonic Gen.	Advance latest MOSFET / IGBT based smps.							
Accessories	Lid, Basket, Drain Valve, Powercord, User Friendly Operation Manual.							

Ultrasonic Cleaner SM Series

Key Industries

- Pharma
- Hospitals
- R&D Laboratories
- Jewellery



Technical Specification:

MODEL	SM 65	SM 100US	SM 140US	SM 200US	SM 200 US (L)	SM 250US	SM 300US	SM 500US
Tank Size (Inches) (L*W*H)	12 x 6 x 6	12 x 9 x 6	21 x 7 x 6	14 x 12 x 8	24 x 9 x 6	16 x 16 x 6	15 x 15 x 8	22 x 12 x 12
Outer Size (Inches) (L*W*H)	15 x 9.8 x 15.4	15 x 12.4 x 15.4	23 x 10 x 15.4	17.4 x 16 x 16.8	26 x 12 x 15.4	18 x 19 x 15.8	19.2 x 19.8 x 19	24 x 15 x 21.4
Tank	SS 304	SS 304	SS 304	SS 304	SS 304	SS 304	SS 304	SS 304
Enclosure	SS 304	SS 304	SS 304	SS 304	SS 304	SS 304	SS 304	SS 304
Tank Capacity	6.5 Liter	10 Liter	14 Liter	20 Liter	20 Liter	25 Liter	30 Liter	50 Liter
Ultrasonic Power	150 Watts.	250 Watts.	300 Watts	400 Watts	400 Watts	500 Watts	500 Watts	750 Watts
Heater Power	500 Watts.	500 Watts.	500 Watts	500 Watts	500 Watts	500 Watts	500 Watts	1000 Watts
PSP	Yes	Yes	Yes	Yes	Yes	Yes	Yes	Yes
Ultrasonic Freq. Khz.	40/33 ± 3	40/33 ± 3	40/33 ± 3	40/33 ± 3	40/33 ± 3	40/33 ± 3	40/33 ± 3	40/33 ± 3
Timer Digital	0 to 99 Min.	0 to 99 Min.	0 to 99 Min	0 to 99 Min	0 to 99 Min	0 to 99 Min	0 to 99 Min	0 to 99 Min
Power Input	230 VAC.	230 VAC	230 VAC	230 VAC	230 VAC	230 VAC	230 VAC	230 VAC
Degas Mode:	On / Off	On / Off	On / Off	On / Off	On / Off	On / Off	On / Off	On / Off
Temperature:	Amb. - 60 °c	Amb. - 60 °c	Amb. - 60 °c	Amb. - 60 °c	Amb. - 60 °c	Amb. - 60 °c	Amb. - 60 °c	Amb. - 60 °c
Transducer:	Imported make PZT type bonded at the bottom of the tank with weld bond technique.							
Ultrasonic Gen.	Advance latest MOSFET / IGBT based smps.							
Accessories:	Lid, Basket, Drain Valve, Powercord, User Friendly Operation Manual.							

Chiller Sonicator

Key Industries

- Pharma



Optional Accessories:

- Touch screen Display
- Printer/data logger/pen drive backup
- Ethernet remote control
- Refrigeration system with safety Feature

Technical Specification:

Standard Model	Unit	SM-USCH (Floor Mounted)	SM-USCH (Compact Table top)
Tank capacity	L	10L to more/Customize	10L.....15L..... 20L/Customize
Ultrasonic Frequency	KHz	33Khz, ±3Khz.	33Khz, ±3Khz.
Working Temperature range	°C	+05.0.....+35.0	+05.0+35.0
Display Resolution	°C	0.1	0.1
Temperature Stability	°C	±1	±1
Digital Timer	Min	0 to 99Minutes.	0 to 99Minutes.
Refrigerant		R134A	R134A
Power Specifications		230VAC /50Hz/1-Phase	230VAC /50Hz/1-Phase

Probe Sonicator

Key Industries

- Pharmaceuticals



Technical Specification:

Parameter	Unit	SPS120-NT	SPS150-NT	SPS250-NT	SPS500-NT	SPS700-NT	SPS750-NT
Ultrasonic power	Watt	120	150	250	500	700	750
Ultrasonic frequency	KHz	20	20	20	20	20	20
Probe tip Diameter	Mm	3	3/6/12 20/25	3/6/12 20/25	3/6/12 20/25	25	25
Sample volume	MI	1-100	1-150	10-250	25-500	50-750	50-1000
Display	Inch	4.3" Touch Screen					
Programmable timer (ON/OFF Pulse)	Min	90 min					
ON/OFF duty Cycle	Min	1 to 20 sec					
Operational Temp.							
Range	°C	RT +25 to +70					
Display Res. for Temp.		0.1					
Tem. Stability	°C	1					
User Profiles	-	1 to 08					
Supply Power Spec		230VAC, 6 Amps, 50Hz					

Heating Refrigerated Circulator

Key Industries

- Pharmaceuticals
- Chemical
- Institutions



BIOMIQC Heating Refrigerated Circulator are widely used for day to day General laboratory Cooling in various laboratory applications. We specialize in both standard and customized model. Unit made for wide range of cooling tasks used in R&D centers, Pharmaceuticals, agrochemicals and chemical and research institutes. Feature has compact design, easy for filling; user friendly control panel with big and bright temperature segment display with additional timer functioning feature.

Technical Specification:

Parameter	Unit	5106
Working Temperature Range	°C	-20 to +60
Capacity	L	06
Temperature Display Resolution	°C	0.1
Temperature Stability	°C	± 1
External Dimensions	(LxWxH) mm	290x460x740
Bath Opening	(LxW) mm	110x55
Pump flow	LPM	09
Heater	watt	1000
Cooling		R404/ R134a Compressor (CFC free gas)
Electrical Rating	-	230 V AC, 10 A, 50Hz
Bath Circulation pump		External pump
Pump out Nozzle Size		6mm ID and 10mm OD
Compressor Safety feature		Compressor ON start delay

Sphinx Chiller Bath (Compact)

Key Industries

- Pharmaceuticals
- Chemical
- Institutions



BIOMIQC chiller circulation bath in compact table top series is design to handle External cooling temperature control task mainly for single/double rota-evapourator/condenser. we approach It for customers in R&D centers, Pharmaceuticals, agrochemicals and chemical research institutes

Technical Specification:

Parameter	Unit	5106
Working Temperature Range	°C	Ambient to -10°C
Capacity	L	06
Temperature Display Resolution	°C	1
Temperature Stability	°C	± 1
External Dimensions	(LxWxH) mm	290x460x740
Bath Opening	(LxW) mm	110x55
Pump flow	LPM	09
Cooling		R134a Compressor (CFC free gas)
Electrical Rating	-	230 V AC, 10 A, 50Hz
Bath Circulation pump		External semi sub immersible pump
Pump out Nozzle Size		6mm ID and 10mm OD
Compressor Safety Feature		compressor ON start delay
• Accessories under FOC		Insulated silicon tubing (Qty. 2 & 1 meter each)

Chiller Circulator bath

Key Industries

- R&D Centers
- Pharmaceuticals
- Agrochemicals
- Chemical Research institutes.



BIOMIQC chiller bath is design to handle External cooling temperature tasks. We used environment friendly R134a/R404a refrigerant compressor. unit made for routing temperature cooling task used in R&D centers, Pharmaceuticals, agrochemicals and chemical research institutes

Parameter	Unit	5110
Working Temperature Range	OC	Ambient to -15°C
Capacity	L	10
Temperature Display Resolution	OC	1
Temperature Stability	OC	± 2
External Dimensions	(LxWxH) mm	400 x 620 x 660
Bath Opening	(LxWxH) mm	110x 90 x150
Pump flow	LPM	13
Cooling		R404a/ R134a (CFC free gas)
Electrical Rating	-	230 V AC, 10 A, 50Hz
Bath Circulation pump		internal magnetic Pump
Pump out Nozzle Size		6mm ID and 10mm OD
Compressor Safety feature		compressor ON start delay
Accessories under FOC		insulated silicon tubing (Qty.2 & 1 meter each)

Stirrer Water Bath

Key Industries

- Pharmaceuticals
- Chemical
- Institutions



Stirrer water bath is alternative type of water bath, its additionally equipped with stirrer motor (semi sub-immersible) for recirculation of water that gives rapid heat exchange and provides greater temperature stability. This application design to handle internal bath temperature control tasks as well as external temperature loads.

Parameter	Unit	SM-06SWB
Working Temperature Range	OC	Ambient to + 99.9
Capacity	L	06
Temperature Display Resolution	OC	0.1
Temperature Stability	OC	± 0.3
Electronic Timer	min	0 to 9999
External Dimensions	(WxDxH) mm	380x230x215
Internal Bath dimensions	(WxDxH) mm	300x150x150
Bath Opening	(WxDxH) mm	140x150x150
Heater Wattage	watt	500
Electrical Rating	-	230 V AC, 10 A, 50Hz
Pump out Nozzle Size		6mm ID and 10mm OD
Bath Circulation pump		External semi sub immersible pump

Chiller Sonicator Bath

Key Industries

- Pharma
- Biotechnology
- Biotech
- Biochemistry



Technical Specification:

Standard Model	Unit	SM-USCH (Compact Table top)
Tank capacity	L	10L.....15L..... 20L/Customize
Ultrasonic Frequency	KHz	33Khz, ±3Khz.
Working Temperature range	°C	+05.0+35.0
Display Resolution	°C	1
Temperature Stability	°C	±1
Digital Timer	Min	0 to 99 Minutes.
Refrigerant		R134A
Power Specifications		230VAC /50Hz/1-Phase

Water Bath

Key Industries

- Institutions
- Microbiology
- Biotechnology
- Life Science



Technical Specification:

Standard Model	Unit	SM-05WB	SM-14WB	SM-20WB
Working Temperature Range	°C		RT +25.0..... +99.9	
Temperature Display Resolution	°C		0.1	
Temperature Stability	°C		± 0.3	
Electronic Timer	min		0 to 9999	
Heater Wattage	KW	0.5	1	1.5
Bath Volume	L	0.5	14	20
Safety Feature	-		Dry running protection	
External Dimensions	(W*D*H) mm	345*265*232	375*415*235	700*370*250
Internal Bath dimensions	(W*D*H) mm	30*150*150	320*300*150	500*300*150
Weight	Kg.	6.88	9.20	14.20
Power Specification	-		230 VAC, 50 Hz	
Concentric Ring lid (Opt.)	-	3 holes	6 holes	12 holes
Drain valve		Not present	present	present

Steam Bath

Key Industries

- Pharma
- R&D Laboratories
- Microbiology
- Research



Technical Specification:

Standard Model	Unit	
Working Temperature Range	°C	Ambient.....+100.0
Temperature Display Resolution	°C	0.1
Temperature Stability	°C	±0.3
Electronic Timer	min	1 to 9999
Bath volume	L	40
Usable bath volume (water Filling)	L	14
Minimum Water level to keep From Bottom	mm	75
Heater Watt.	KW	2
External Dimensions	(LxWxH) mm	510x360x380
Internal Bath dimensions	(LxWxH) mm	450x290x290
Safety Alarms /Buzzer		Water level sensing
Power Specifications		230 V AC, 10 A, 50Hz

Sonicator Shaker

Key Industries

- Pharma
- R&D Laboratories
- Microbiology
- Research



Technical Specification:

Parameter	Unit	SSBT-20
Working Temperature	°C	
Range		Ambient - 60
Display Resolution	°C	1
Temperature Capacity	°C	±1
Ultrasonic Frequency	Khz	33Khz, ±3
Bath Capacity	L	20
Adjustable Shaking Frequency	RPM	20 - 45
Shaking Stroke	mm	50
Internal Bath Dimensions	mm	485 * 300 * 150
External Bath Dimensions	mm	655 * 380 * 425
Tray Size	mm	385 * 260 * 65
Mains Power Supply	-	230 VAC, 10 A, 50 Hz

Vaccum Oven

Key Industries

- Pharmaceuticals
- Chemical
- Institutions



Salient Features:

- Door GASKET : Soft Silicon Rubber Door Gasket
- Door Lock : Toggle Clamps type Easy Door Lock
- Safety Fuse : Solid State Safety Fuse
- Valves : Ball Valve Type Valves 1 for Vacuum & 1 for N2 Purging or Vent
- Controller : Dual Display Controller
- Solid State Relay : Heavy Duty Solid State Relay

Technical Specification:

Sr. No.	Inner Size (In In) (L X W X D)	Outer Size Approx. in In chace (W X D X H)	Rating Watts	Liter Capacity	Numbers of Shelves
1	12" x 12" x 12"	21" x 18" x 28"	750 W	27 Liter	2 Nos.
2	14" x 14" x 14"	23" x 20" x 30"	1000 W	42 Liter	2 Nos.
3	14" x 14" x 20"	22" x 20" x 36"	1000 W	60 Liter	4 Nos.
4	18" x 18" x 18"	26" x 24" x 35"	1500 W	90 Liter	3 Nos.
5	18" x 18" x 24"	26" x 24" x 42"	2000 W	120 Liter	4 Nos.

Oil Bath

Key Industries

- Chemical Industries
- Chemistry Lab
- Pharmaceuticals
- Defense Sector



Oil bath type of heated bath where Applications demands Bath temperature upto 250°C used for Internal Bath temperature task. The Application carried out in the open bath. Oil baths provide excellent temperature uniformity and smooth working for various laboratory test procedures. Applications Areas are Chemical Industries, Chemistry Labs & Defense Sectors.

Technical Specification:

Standard Model	Unit	
Working Temperature Range	°C	Ambient +25.....+250
Capacity	L	250ml to 20Liter
Temp. Display Resolution	°C	1..... 0.1
Temp. Stability	°C	± 1
Safety circuit Temp. overshoot Alarm		Yes
Internal Dimension	mm	Based on volume
Power Supply		1-Phase /230V-AC /350W to 3000W

Autoclave

Key Industries

- Pharma
- Hospital
- Biotechnology



Technical Specification:

Standard model	Unit					
Capacity	L	35	53	75	113	180
Working chamber dime.	mm	Ø 300x500	Ø 350x550	Ø 400x600	Ø 450x710	Ø550x760
Loading type	-	Top	Top	Top	Top	Top
Carrier Dimensions	mm (nos)	Ø250x450 With separator	Ø400x500 With separator	Ø350x550 With separator	Ø400x330	Ø500x350
Dressing drum (optional)	mm	Ø270x220	Ø330x280	Ø380x300	Ø380x300	-
Heater power	Kw	1.8	2.25	3	3.5	5
Temperature range	°C	122.0	122.0	122.0	122.0	122.0
Operating pressure	PSI/kPA	16/110.3	16/110.3	16/110.3	16/110.3	16/110.3
Outer dimensions	mm	550x390x85 50+300	595x445x89 5+355	670x490x87 70+400	725x545x105 50+470	825x650x105 80+580
Gross Weight	Kg	92	102	124	156	195
Power supply		230V AC / 10 Amps to 32Amps/50Hz				

BOD Incubator

Key Industries

- Pharma
- R&D Laboratories
- Microbiology
- Research



Features:

- Environment-friendly
- Minimal heat exchange
- Quality-assured

Product Details:

- Double walled inner 304 S.S. and exterior G.I. powder coated finish
- Precise solid - state DIGITAL indicating temperature controller
- The "CFC" free eco - friendly cooling kit includes
- Hermetically sealed compressor, fan cooled, and
- Condenser and overload protection system
- Highly insulated chamber and door minimize the heat exchange
- A full length glass door for observation of test without disturbing temp. equilibrium
- Selection of model for temperature 5°C - 60°C
- PID based microprocessor controllers with printer interface or PC output are also available on request

Incubator with Orbital Shaker

Key Industries

- Chemical Industries
- Chemistry Lab
- Pharmaceuticals
- Defense Sector



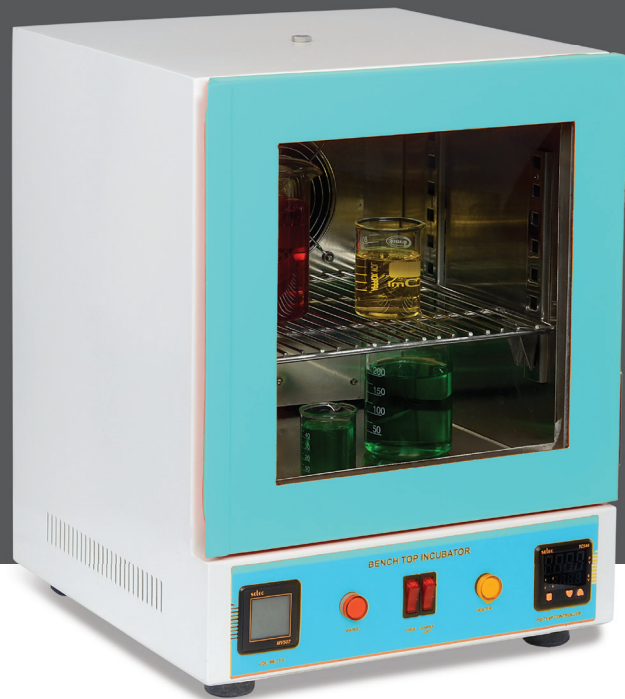
Shaking incubator is widely known as environmental shaker. For certain Applications to produce cell culture growth, for that need to provide Shaking and heating in simultaneous manner. Our S -clean Orbital Shaking Incubators are designed for precise temperature control and simultaneous shaking applications also unit are equipped with universal Shaking platform and operations controlled through digital PID controller. Applications areas are microbiology lab, Biotechnology lab, life science.

Standard Model	Unit		
Volume	L	75	130
Temperature Range	°C	Ambient+70.0°	
Shaking Speed	RPM	20-200 orbital Strokes per min.	
Resolution	°C	0.1°C	
Temp. Stability	°C	± 0.5 °C	
Sample viewing window	-	Yes	
Digital RPM indication		Yes	
Tray Size in mm (LxWxH)		325x325	425x425
Chamber Size in mm (LxDxH)		400x425x450	500x525x500
Stroke length	mm	25mm	25mm
Power Supply		1-Phase /230V-AC /350W to 3000W	

Bench top Micro-lab Incubator

Key Industries

- Biotechnology
- Microbiology
- Pathology lab



With the help of Precise temperature and ventilation, Incubators are essential for much experimental work in cell biology, microbiology and molecular biology and are used to culture both bacterial and eukaryotic cells.

Standard Model	Unit	MBIN-25
Tank Volume	L	25
Temperature Range	°C	Ambient+60.0
Resolution	°C	0.1°C
Temp. Stability	°C	±0.3
Sample Viewing Window	-	Yes
Inner Chamber Size	(LxWxH)mm	300x260x300
Outer Chamber Size (LxWxH)		350x360x440
Heater Power Watt	W	250
Power Supply		1-Phase/230V-AC/350W to 3000W

Magnetic Stirrer

Key Industries

- Pharma
- R&D Laboratories
- Microbiology
- Research



To mix watery liquid, provided with soft start facility.
Electronic speed regulator & supplied with S.S. top and base body, Teflon Magnetic it.

Control Box

Controller:	Manual / Digital
Speed:	Variable up to 1000 RPM
Power Supply:	230 VAC

Heating Block / Dry Bath

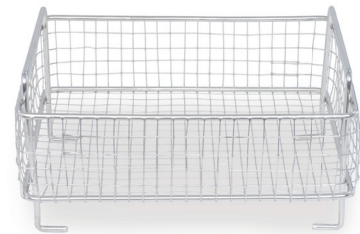
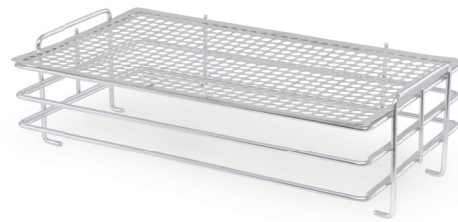
Key Industries

- Chemical Industries
- Chemistry Lab



Standard Model	Unit	
Temperature Range	°C	Ambient +110
Resolution	°C	1 to 0.1
Temp. Stability	°C	± 0.5
Inner Chamber Size (LxWxH)	mm	75x150x40
Outer Chamber Size (LxWxH)	mm	135x200x190+LEG10
Heater power	Watt	500
Power Supply		Phase /230V-AC /350W to 3000W

Accesorios



Application of Ultrasonic Cleaners



Application of ultrasonic cleaner in

AUTOMOBILE INDUSTRIES

- Cleaning finished goods prior to dispatch
- Cleaning unfinished raw materials
- Cleaning up of oil, loose cutting brush, dust,
- Cleaning up of heat treatment jobs
- Cleaning die's & molds
- Piston & rings cleaning
- Bearing cleaning
- Crank shaft cleaning
- Gears cleaning
- Engine assembly cleaning
- Carburetors cleaning
- Fuel injectors cleaning

MECHANICAL INDUSTRIES

- Cleaning finished goods prior to dispatch
- Cleaning unfinished raw materials
- Cleaning up of oil, loose cutting brush, dust
- Cleaning up of heat treatment jobs
- Cleaning die's & molds
- Cleaning different metal parts
- Cleaning metal parts before & after process

Application of Ultrasonic Cleaners



Application of ultrasonic cleaner in

MEDICAL FIELD

- Cleaning surgical instruments
- Cleaning laproscopic instruments
- Cleaning orthoscopic instruments
- Cleaning ent instruments
- Cleaning ophthalmic instruments

PHARMACEUTICAL

- Degassing solvents & mobile phase
- Mixing two solvents
- Dissolving powder in the solvents
- Glass ware cleaning

ELECTRONIC INDUSTRIES

- Cleaning flux from soldered printed circuit board
- Cleaning final assembled pcb
- Cleaning dust & solder balls from pcb
- SMD PCD also

TEXTILE INDUSTRIES

- Cleaning spinrates
- Cleaning reeds for yarn looms
- Cleaning bearings.
- Cleaning mechanical parts of textile machines

Our Client



Manufacturer by:

Samarth Electronics

Manufacturer of **Ultrasonic Cleaner & Lab Instruments**

Unit No. 3A & 3B L Ground Floor, Ganesh Compound,
Pawar Section, Chikhholi M.I.D.C., Ambarnath (E) 421 506, Maharashtra, India
Tel: +91 9075013862 / +91 9320 240 250 / +91 9322 916 496
Email: info@samarthelectronics.com • Web: www.samarthelectronics.com